



مؤسسة ابتسام صالح بن علي الغامدي للمقاولات
Ibtesam Saleh Ali Al-Ghamdi For Contracting Est.



NEW VISION OF CONTRACTING WORLD

General Trading and Contracting, Road Works & Infrastructure Planning
C.R: 40301223616 P.O Box 133422 Jeddah 21382 K.S.A



INDEX

Ibtesam Saleh Ali Al- Ghamdi is proud, for its compatible growth with the development of infrastructure and mega projects in Saudi Arabia, and its participation at the highest levels, to Provide Civil & Electromechanical services and works, to become one of the leading Establishments in contributing to urban development in the Kingdom Of Saudi Arabia. Our motto is a symbol of confidence that we did with skill and perfection, and we have done in a manner characterized by providing the best and the completion times planned. Facing all the challenges of work to prove the feasibility of the partnership and deal with us for our both customers and suppliers to come in the priorities of all ISG employees, engineers, technicians and administrators, and this leads to success of projects. These achievements by Ibtesam Saleh Ali Al- Ghamdi are due to the engineering and management staff backed by a team of qualified technicians and workers trained to perfection and work within plans. In addition to facilitates the latest technology of equipment and tools. The guarantee of quality and excellence in performance to all our partners is our goal.

We are always looking forward to gain your trust.

Ibtesam Saleh Ali Al- Ghamdi General Manager

**General Trading and Contracting, Road Works &Infrastructure Planning
C.R: 40301223616 P.O Box 133422 Jeddah 21382 K.S.A**



Our Vision

Our vision is to attentively handle the most significant strategic trends in our business domain and transform them into reality of products and services. Moreover, our expansion strategy to add new more products will always consider of our business activities. It allows us to be closer to our customers, accomplished by further development and creation of multicultural environment by fostering innovative creativity. Our organization strives sincerely and looking forward with extensive keen for seeking confident cooperation and development based on the foundation of mutual benefits with our valuable customers indeed.



مؤسسة ابتسام صالح بن علي الغامدي للمقاولات
Ibtisam Saleh Ali Al-Ghamdi For Contracting Est.

Our Mission

To be an Establishment With global standards and responsibility for creativity and innovation, provide ways to represent specialized construction techniques for high quality, dedication to meet the needs of various companies and sectors, to contribute to urban renaissance, and to achieve the aspirations of modern construction.

General Trading and Contracting, Road Works &Infrastructure Planning
C.R: 40301223616 P.O Box 133422 Jeddah 21382 K.S.A



Our Philosophy

At the heart of our philosophy there are 7 guiding principles

- 1) **Simplicity**: Simplicity is Power
- 2) **Innovation**: Always at the cutting-edge of technology and development
- 3) **Service**: We strive towards customers' satisfaction and our satisfied customers are our most important asset.
- 4) **Fairness**: We are driven to serve buyers and suppliers equally.
- 5) **Accountability**: By facing our responsibilities, we are better able to move forward.
- 6) **Honesty**: Telling it how it is.
- 7) **Openness**: Always willing to learn from others, share information, and gain new insights

General Trading and Contracting, Road Works & Infrastructure Planning
C.R: 40301223616 P.O Box 133422 Jeddah 21382 K.S.A



مؤسسة ابتسام صالح بن علي الغامدي للمقاولات
Ibtesam Saleh Ali Al-Ghamdi For Contracting Est.

About us

We are pleased to introduce, Ibtesam Saleh Ali Al- Ghamdi as a fast growing and a leading organization established in 2019, based in Jeddah, Saudi Arabia. Specialized in Trading, General construction, electro-mechanical works, prefab housing solution and Maintenance. We are qualified contractors and carry out interior decoration project works, undertake construction projects, Hotels, Resorts, Villas and Building Projects. ISG has grown to become a dynamic force, via its branches and projects in vital areas of the Kingdom of Saudi Arabia. Engaged in General Construction of buildings, Electrical, Mechanical Renovation, Water Insulation and Maintenance work.

General Trading and Contracting, Road Works &Infrastructure Planning
C.R: 40301223616 P.O Box 133422 Jeddah 21382 K.S.A



1) Engineering Division

The scope of this division is to prepare all engineering facilities to execute the works at site, same as Shop drawings and As Built Drawing and all required engineering supports. Also study the tender's drawings; all counteract documents, and pricing the items. Even though to prepare the design drawings, specification and bill of quantities if required.

2) Electrical Division

The scope of this Division is to supply and install:

1. Lighting system.
2. Power sockets cables & cable tray & accessories.
3. Fire alarm system.
4. Lighting & Earthling system.
5. Generators & transformers.
6. Telephone system.
7. Control & Monitoring.
8. Television system.
9. Nurse call system.
10. BMS.
11. Infrastructures cables & external lighting system.
12. Testing & commissioning



Mechanical Division

The scope of this division is to supply and install all bellow mechanical systems as per specification, drawing and contract :

- 1.All equipment & networks related to Central HVAC system.
2. All networks & equipment for firefighting system.
3. Gas and fuel networks and accessories with all control and monitoring devices.
4. Steam networks and accessories.
5. Domestic and draining systems.
6. Irrigation networks and accessories.
7. Compressed air networks and accessories.
8. Refrigeration networks and accessories.
9. Water treatment equipment.
10. Medical gas networks and equipment.
11. All infrastructure works “water, draining”.
12. Testing, balancing and commissioning.



4) Insulation & Maintenance Division

ISG through this section makes the required maintenance and repair for all electromechanical systems for industrial facilities, commercial and residential, and hospitals.

We have carried out several

Insulation & maintenance projects either in public or private sectors , include hospitals, shopping malls, stores and government buildings, through special maintenance team covers the main regions in KSA, and provide with all required instruments and tools, to execute the works as per client requirements.

In Some situation and according to Project Size and time frame we cooperate with specialized contractors in this field or with Insulation Material Suppliers.



4) PREFAB DIVISION

ISG through this section provides:

- 1) Prefab housing solutions
- 2) Portable cabin of all sizes and shapes
- 3) Hangers structure
- 4) Steel structure for Buildings
- 5) Portable camps
- 6) Tent houses
- 7) Fencing (boundary walls)
- 8) Cladding + exterior and interior decoration of all kinds
- 9) Gypsum board works (wall partition, interior decoration etc.)
- 10) Cement board works



WHY PREFAB

Prefab houses have been proven to be eco-friendly. As these portable cabin are completely recycle able. This way there are no damages to environment

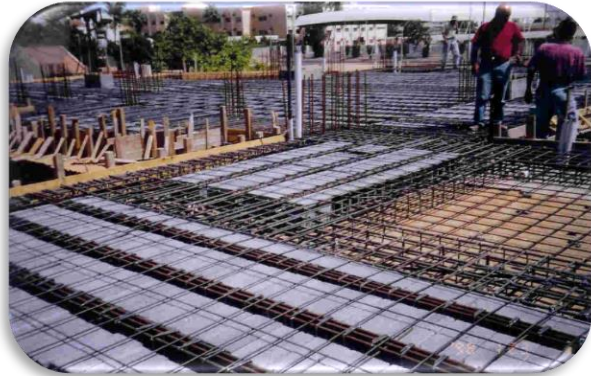
Advantages of Prefab housing

- 1) Competitive price compared with traditional construction cost saving more than 50%.
- 2) Save Time
- 3) Reuse
- 4) Easy to Install
- 5) Kinds of Applications .
- 6) Don't Need to Depend on Land .
- 7) Fire rated
- 8) Easy to transport

General Trading and Contracting, Road Works &Infrastructure Planning
C.R: 40301223616 P.O Box 133422 Jeddah 21382 K.S.A



مؤسسة ابتسام صالح بن علي الغامدي للمقاولات
Ibtesam Saleh Ali Al-Ghamdi For Contracting Est.



General Trading and Contracting, Road Works & Infrastructure Planning
C.R: 40301223616 P.O Box 133422 Jeddah 21382 K.S.A



مؤسسة ابتسام صالح بن علي الغامدي للمقاولات
Ibtesam Saleh Ali Al-Ghamdi For Contracting Est.



General Trading and Contracting, Road Works & Infrastructure Planning
C.R: 40301223616 P.O Box 133422 Jeddah 21382 K.S.A



مؤسسة ابتسام صالح بن علي الغامدي للمقاولات
Ibtesam Saleh Ali Al-Ghamdi For Contracting Est.



General Trading and Contracting, Road Works & Infrastructure Planning
C.R: 40301223616 P.O Box 133422 Jeddah 21382 K.S.A



مؤسسة ابتسام صالح بن علي الغامدي للمقاولات
Ibtisam Saleh Ali Al-Ghamdi For Contracting Est.



General Trading and Contracting, Road Works & Infrastructure Planning
C.R: 40301223616 P.O Box 133422 Jeddah 21382 K.S.A



**Site Clearing & Preparation
for Backfilling**



Preparation for Backfilling



Backfilling



Preparation for Backfilling



Survey Marking



Water spreading prior to Backfilling



Soil Investigation



**Area Preparation for Site
Camp**



Soil Investigation Test



**Site Clearing &
Grading**



**Cutting to Required
Levels**



Site Grading



Sub Base Collection



Sub Base Collection



Lose Sand Removal



**Water Mixing for Back
Filling Material**



Loading Fill Material



Loading Fill Material



Road Preparation



Roads Preparation



Compacted Roads



مؤسسة ابتسام صالح بن علي الغامدي للمقاولات
Ibtisam Saleh Ali Al-Ghamdi For Contracting Est.



Porta cabin frame



Porta cabin wall



General Trading and Contracting, Road Works & Infrastructure Planning
C.R: 40301223616 P.O Box 133422 Jeddah 21382 K.S.A



مؤسسة ابتسام صالح بن علي الغامدي للمقاولات
Ibtisam Saleh Ali Al-Ghamdi For Contracting Est.



General Trading and Contracting, Road Works & Infrastructure Planning
C.R: 40301223616 P.O Box 133422 Jeddah 21382 K.S.A



مؤسسة ابتسام صالح بن علي الغامدي للمقاولات
Ibtisam Saleh Ali Al-Ghamdi For Contracting Est.



General Trading and Contracting, Road Works & Infrastructure Planning
C.R: 40301223616 P.O Box 133422 Jeddah 21382 K.S.A



مؤسسة ابتسام صالح بن علي الغامدي للمقاولات
Ibtesam Saleh Ali Al-Ghamdi For Contracting Est.



General Trading and Contracting, Road Works & Infrastructure Planning
C.R: 40301223616 P.O Box 133422 Jeddah 21382 K.S.A



مؤسسة ابتسام صالح بن علي الغامدي للمقاولات
Ibtisam Saleh Ali Al-Ghamdi For Contracting Est.



General Trading and Contracting, Road Works & Infrastructure Planning
C.R: 40301223616 P.O Box 133422 Jeddah 21382 K.S.A



مؤسسة ابتسام صالح بن علي الغامدي للمقاولات
Ibtesam Saleh Ali Al-Ghamdi For Contracting Est.



General Trading and Contracting, Road Works & Infrastructure Planning
C.R: 40301223616 P.O Box 133422 Jeddah 21382 K.S.A





مؤسسة ابتسام صالح بن علي الغامدي للمقاولات
Ibtisam Saleh Ali Al-Ghamdi For Contracting Est.



General Trading and Contracting, Road Works & Infrastructure Planning
C.R: 40301223616 P.O Box 133422 Jeddah 21382 K.S.A



مؤسسة ابتسام صالح بن علي الغامدي للمقاولات
Ibtisam Saleh Ali Al-Ghamdi For Contracting Est.



General Trading and Contracting, Road Works & Infrastructure Planning
C.R: 40301223616 P.O Box 133422 Jeddah 21382 K.S.A



مؤسسة ابتسام صالح بن علي الغامدي للمقاولات
Ibtesam Saleh Ali Al-Ghamdi For Contracting Est.



Out Door Ducts & Package AC Units



Pump Room

General Trading and Contracting, Road Works & Infrastructure Planning
C.R: 40301223616 P.O Box 133422 Jeddah 21382 K.S.A



**Fixing Ducts, chilled water pipes,
and AHUs**



Boilers Installation



**Cable Tray, Round Duct,
and Chilled Water Piping
Installation**



Wires with Flexible Conduits



Fire Fighting Pipes and Cable Tray



Hot water storage tanks



Chilled Water Piping in Pump Room



مؤسسة ابتسام صالح بن علي الغامدي للمقاولات
Ibtسام Saleh Ali Al-Ghamdi For Contracting Est.



Cable Tray Installation



MDB Installation



Cabling Installation

General Trading and Contracting, Road Works & Infrastructure Planning
C.R: 40301223616 P.O Box 133422 Jeddah 21382 K.S.A



Our Valuable Clients

- SAFARI LIMITED COMPANY (ASPHALT WORKS) (PORTABLE CABINS)
- ARRAB CONTRACTING COMPANY (ASPHALT WORKS) (PORTABLE CABINS)
- NATIONAL POWER CONSTRUCTION COMPANY (ASPHALT WORKS) (PORTABLE CABINS)
- EI SEIF ENGINEERING CONTRACTING COMPANY (ASPHALT WORKS) (PORTABLE CABINS)
- DELTA COMPANY (ASPHALT WORKS)
- AKON INTERNATIONAL (PORTABLE CABINS)
- SAUDI BINLADIN (PORTABLE CABINS)
- SIGNAL CONTROLS (PORTABLE CABINS)
- AL FANAR (PORTABLE CABINS) (ASPHALT WORKS)
- MAADEN MINING COMPANY (PORTABLE CABINS)

General Trading and Contracting, Road Works &Infrastructure Planning
C.R: 40301223616 P.O Box 133422 Jeddah 21382 K.S.A



٧٠٠٦٠٦٧٧٠١
٤٠٣١٢٢٣٦١٦
١٤٤٠/٠٦/٢٧

الرقم:
التاريخ:

شهادة تسجيل مؤسسة فردية

وزارة التجارة والاستثمار
Ministry of Commerce and Investment

الإسم التجاري للمؤسسة: مؤسسة ابتسام صالح بن علي الغامدي للمقاولات
مركزها الرئيسي: ٦٤٣٤، العام، حي المشاعر، ٦٤٣٤
ص.ب.: _____ الرمز البريدي: ٢٤٢٧٦ هاتف: ١١٧٢٨٣٣٣١
اسم التاجر: ابتسام صالح بن علي الغامدي الجنسية: سعودي تاريخ الميلاد: ١٤٠٧ هـ
رقم السجل المدني - الإقامة: ١٠٦٣١٢٦٢٨٦ تاريخه: ١٤٤٠/٠٦/١٥ مصدره: _____
رقم الحفيظة - الجواز: _____ تاريخه: _____ مصدره: _____
النشاط: الإنشاءات العامة للمباني السكنية

رأس المال: ١٠٠٠٠ عشرة آلاف ريال فقط لا غير
اسم المدير أو الوكيل المفوض: ابتسام صالح بن علي الغامدي
الجنس: سعودي تاريخ الميلاد: ١٤٠٧ هـ مصدره: _____
رقم السجل المدني - الإقامة: ١٠٦٣١٢٦٢٨٦ تاريخه: ١٤٤٠/٠٦/١٥ مصدره: _____
سلطات المدير: _____
يشهد مكتب السجل التجاري بمدينة مكة المكرمة بأنه تم تسجيل هذه المؤسسة بسجل مدينة مكة المكرمة
وتنتهي صلاحية الشهادة في ١٤٤٣/٠٦/٢٧ بموجب الإيصال رقم: ٣٨٢٣٢٩٧ و تاريخ: ١٤٤٠/٠٦/٢٧

نائب صالح الطاسان
مدير السجل التجاري:
التوقيع:

يمكنك التحقق من صحة هذه الشهادة بالدخول على <http://v.mci.gov.sa>
To Verify the information of this certificate visit: <http://v.mci.gov.sa>

General Trading and Contracting, Road Works & Infrastructure Planning
C.R: 40301223616 P.O Box 133422 Jeddah 21382 K.S.A



مؤسسة ابتسام صالح بن علي الغامدي للمقاولات
Ibtesam Saleh Ali Al-Ghamdi For Contracting Est.



Raja Mohammad Riaz Feroz
Director of ISG

راجا محمد رياض فيروز

+966 59 999 5518 - +92 335 999 5518
mohammadriaz@isgprefab.com
ISG Prefab
www.isgprefab.com



Visit our website: <https://www.isgprefab.com/>

General Trading and Contracting, Road Works & Infrastructure Planning
C.R: 40301223616 P.O Box 133422 Jeddah 21382 K.S.A