



GENERAL SPECIFICATION

CHASSIS: The Chassis is constructed of IPE 120.mm along the long sides as girders and IPE- cross beams at the gables and IPE-cm internal cross-beams with lifting lugs. All these steel members are welded to gather to give the chassis optimum strength, rigidity and stability all steel members are primed for weather protection.

FLOORS: A-SUB-FLOOR: is constructed of steel hollow tubes joists size (30x60) mm Spaced at (400) mm. c/c with primer coating for weather protection.

B-FLOOR DECK: is made up of (18) mm. thick plywood boards screwed to the sub-floor joists, Marine plywood shall be used for all wet areas. For flooring vinyl or carpet will be used. For toilet areas vinyl will be used

Wall: External Walls are constructed of sandwich panels (locally made) (50) mm thick, one (*inner*) side covered with (3) mm pre-painted decorative MDF sheeting and (outer) side with zinc (0.32) mm insulated in the middle with polystyrene (44) mm thick. The length of panel is (2.44m) and the width is (1.22m)

In case of toilets and kitchen

External Walls are constructed of sandwich panels (50) mm thick, both sides are covered with zinc (0.32) mm insulated in the middle with polystyrene (44) mm thick. The length of panel is (2.44m) and the width is (1.22m)

ROOFS & CEILINGS:

Roofs are constructed of structural steel truss and are covered with corrugated galvanized pre-painted roof sheets (white colour).

Ceiling is of white 3mm plywood (insulated with aluminium foil insulation above ceiling)



DOORS: Doors are made of aluminium frames and are covered both sides with the same decorative plywood boards used for internal walls.

All internal and external doors are fitted with good quality door Lock.

All doors are insulated with Styrofoam. (Accessories such as door closers, additional locks etc. are not included)

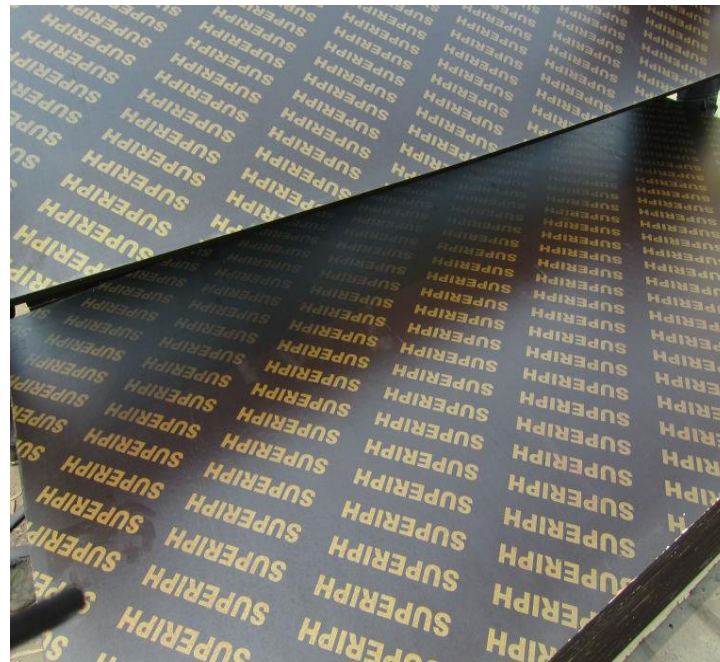
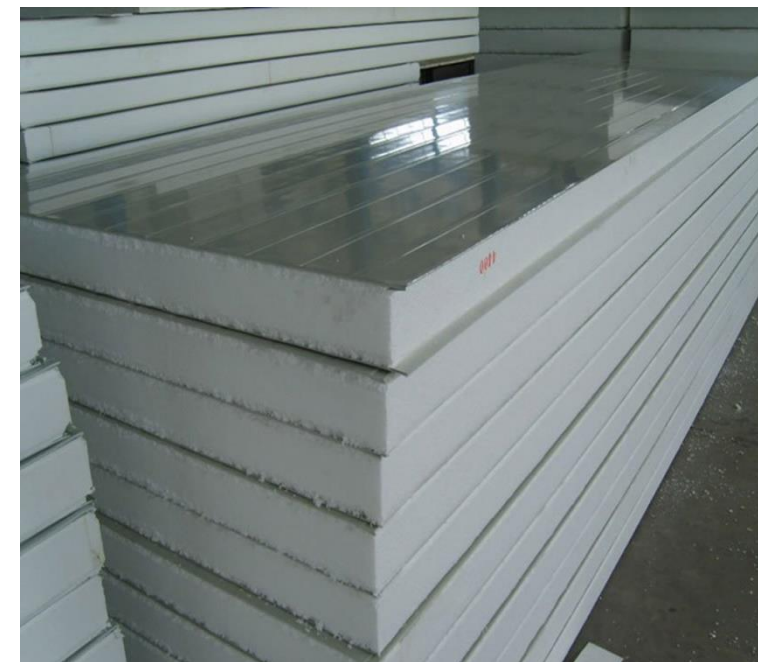
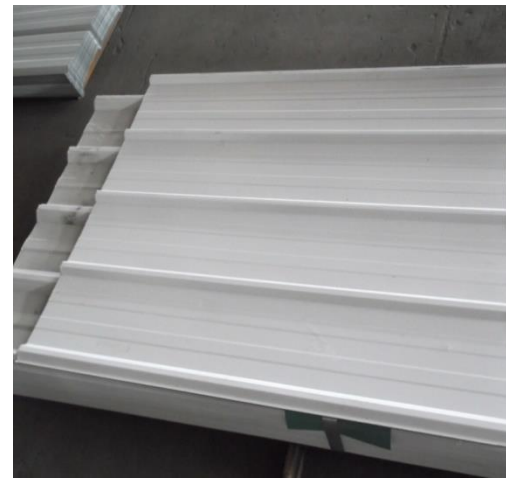
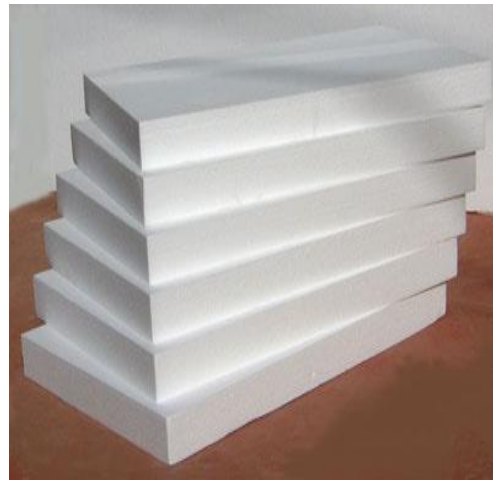
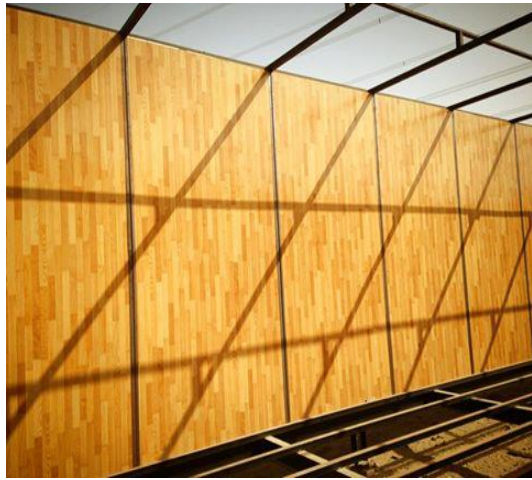
ELECTRICAL: Electrical networks are executed in accordance with approved drawing. All electrical wiring is embedded inside the walls and ceiling. The light fixtures are of low energy consumption led light. Enough light shall be provided to have proper illumination. All the electrical wiring shall be connected a Main panel Board with suitable breakers and exhaust fan will be in all toilets.

KITCHEN: Kitchen will include a floor cabinet and sink on top with necessary accessories.

W/C: Toilet seats are of European style or Arabic type with all necessary accessories.

WASHBASINS: Water tap with hot and cold functioning plus attached mirror in front of every wash basin.

Note: This following specification is non-fire rated.





SPECS FOR PORTA CABIN

Foundation	I beam: 120mm x 60mm
Steel leg	I beam : 120mm x 60mm Height 25cm
Base frame structure	I beam : 120mm x 60mm painted with black steel paint for weather and rust protection
Flooring	18mm thick marine plywood. Carpet for dry Ares and vinyl for wet areas
Wall	External Walls are constructed of sandwich panels (locally made) (50) mm thick. The length of panel is (2.44m) and the width is (1.22m)
Wall (outside)	(outer) side with zinc (0.32) mm
Wall (middle)	insulated in the middle with polystyrene (44) mm thick
Wall (inside)	(inner) side covered with (3) mm pre-painted decorative MDF sheeting
Wall	Zinc (0.32) mm on both sides, insulated in the middle with polystyrene (44) mm thick. The length of panel is (2.44m) and the width is (1.22m)



Roof	Roofs are constructed of structural steel trespass and are covered with corrugated galvanized pre-planted roof sheets (white colour)
Ceiling	Ceiling is of white 3mm plywood (insulated with aluminium foil insulation above ceiling). Clear height from floor is 2.3m
Doors	Doors are made of aluminium frames and internal side is 3mm thick decorative plywood (same as wall) and for outside is 0.32mm zinc
Window	Aluminium framed window single glass with fly screen horizontal sliding. 1m x 1m
Electrical	All electrical wiring is embedded inside the walls and ceiling. All the electrical wiring shall be connected a Main panel Board. Suitable sockets and lights are provided in each room. External light for each door.



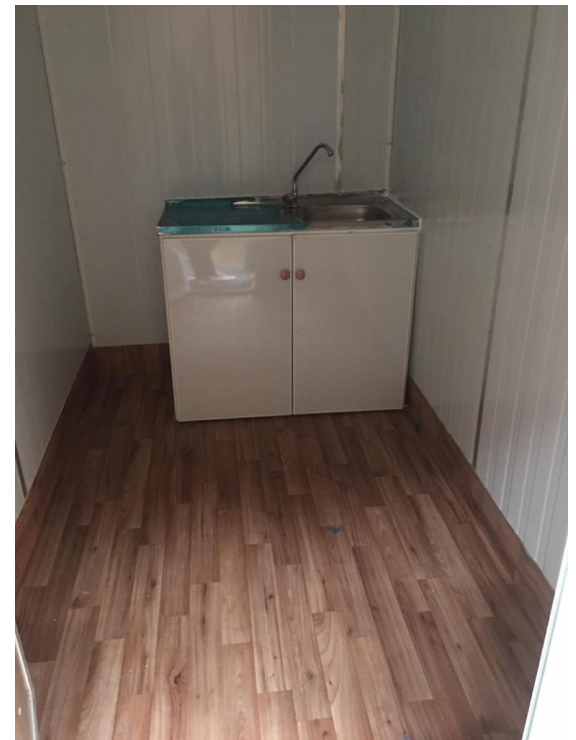
Portable cabin frame



Celling 3mm with led lights



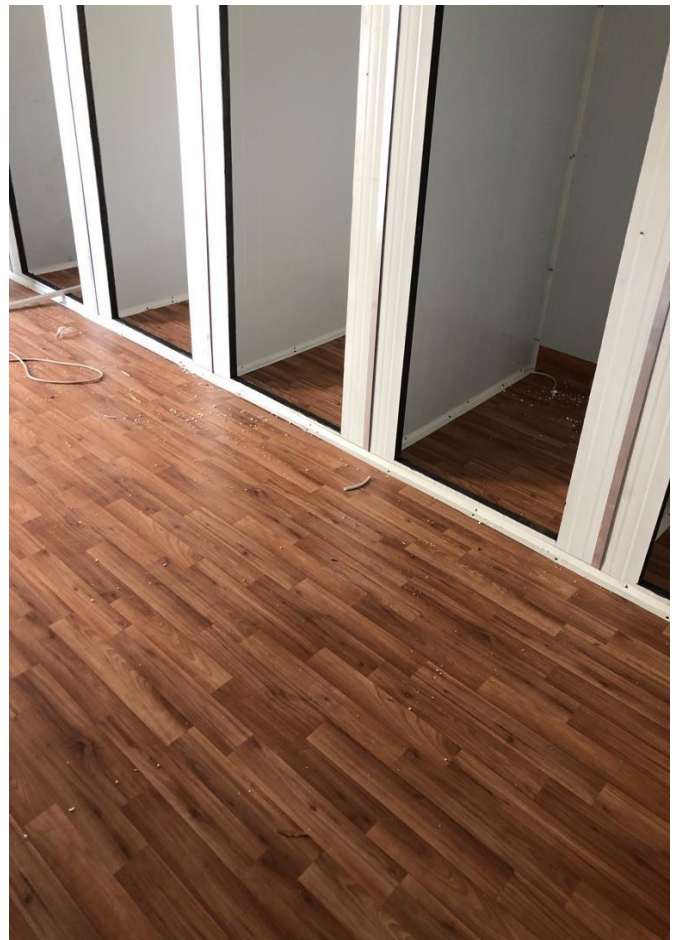
Washbasin with attached mirror



Kitchen cabinet with sink



Portable cabin outside



Vinyl for flooring



Portable cabin external side view



Portable cabin external view



Carpet and wooden skirting



Interior wall decorative MDF 3mm



Interior of portable cabin



Exterior of door



Interior of door



18mm marine plywood for flooring



Vinyl sheet for flooring



Aluminium window



Steel I-Beam (12 cm)



40 mm x 40 mm steel tube



Portable cabin steel structure (bottom)



Portable cabin steel structure (top)



Interior of portable cabin



مؤسسة ابتسام صالح بن علي الغامدي للمقاولات
Ibtesam Saleh Ali Al-Ghamdi For Contracting Est.



General Trading and Contracting, Road Works & Infrastructure Planning
C.R: 40301223616 P.O Box 133422 Jeddah 21382 K.S.A



Exterior of portable cabin